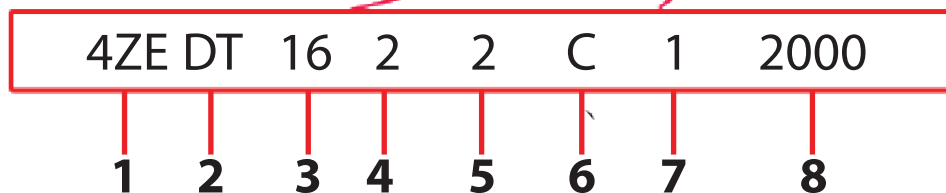
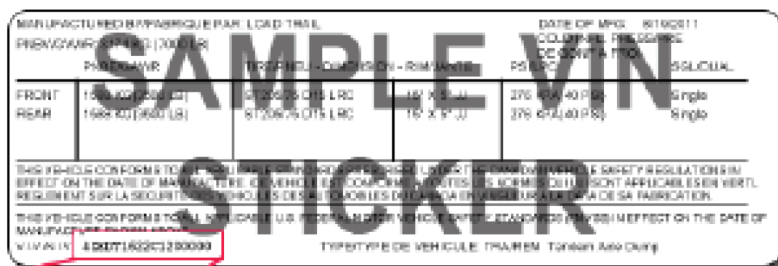




## Load Trail VIN Decoder

### Load Trail VIN Number Key

Load Trail VIN numbers are found on the VIN sticker of your trailer. This sticker is typically located near the front of the trailer on the driver's side. In some instances, the sticker has been relocated to allow for special trailer configurations.



1. Company Identifier (4ZE = Load Trail, 5L8 = Load Max)
2. Trailer Product Line:
  - Dump & Gooseneck Dump Trailers - DS, DT, DV, DZ, GD, GM, GV, GZ, PX, GX, DH, HG, DM, GM,
  - Heavy Duty Goosenecks & Pintle Hooks - PH, GH, PR, GR
  - Low-Pro Goosenecks & Pintle Hooks - PP, PL, GP, GL, HH, HL, HP,
  - Single Axle and Single Axle Landscape - ZE, SE, SA, SS, SB, SC, LS, SH, AT,
  - Tank Trailers - FT
  - Standard/Classic Goosenecks & Pintle Hooks - DK, PS, GS,
  - Tandem Axle Utility and Tandem Axle Landscape - AT, UE, UT, UD, LT
  - Tilt Decks - TM, TD, TT, TL, TH, GG, GT, GN, PE, PT, GE, SH,
  - Car-Haulers & Bob Cats - CB, CZ, CH, CP, CS, CC, BC, EH, GC, GB, GF, EG,
3. Trailer Length (in feet)
4. Number of Axles (1-single, 2-tandem, or 3-triple)
5. Check Digit (Calculated digit based on all other VIN characters used for validation)
6. Year of Manufacture (T = 1996, V = 1997, W = 1998, X = 1999, Y = 2000, 1 = 2001, 2 = 2002, 3 = 2003, 4 = 2004, 5 = 2005, 6 = 2006, 7 = 2007, 8 = 2008, 9 = 2009, A = 2010, B = 2011, C = 2012, D = 2013, E = 2014, F = 2015, G = 2016, H = 2017, J = 2018, K = 2019, L = 2020, M = 2021, N = 2022, P = 2023)
7. Production Plant (1 or 2)
8. Serial Number (Number used to indicate production sequence.)